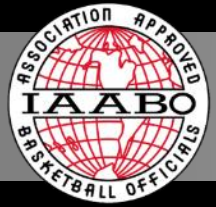


One rule, one interpretation, one mechanic



**Interpretations for
January 5, 2025**



AGENDA

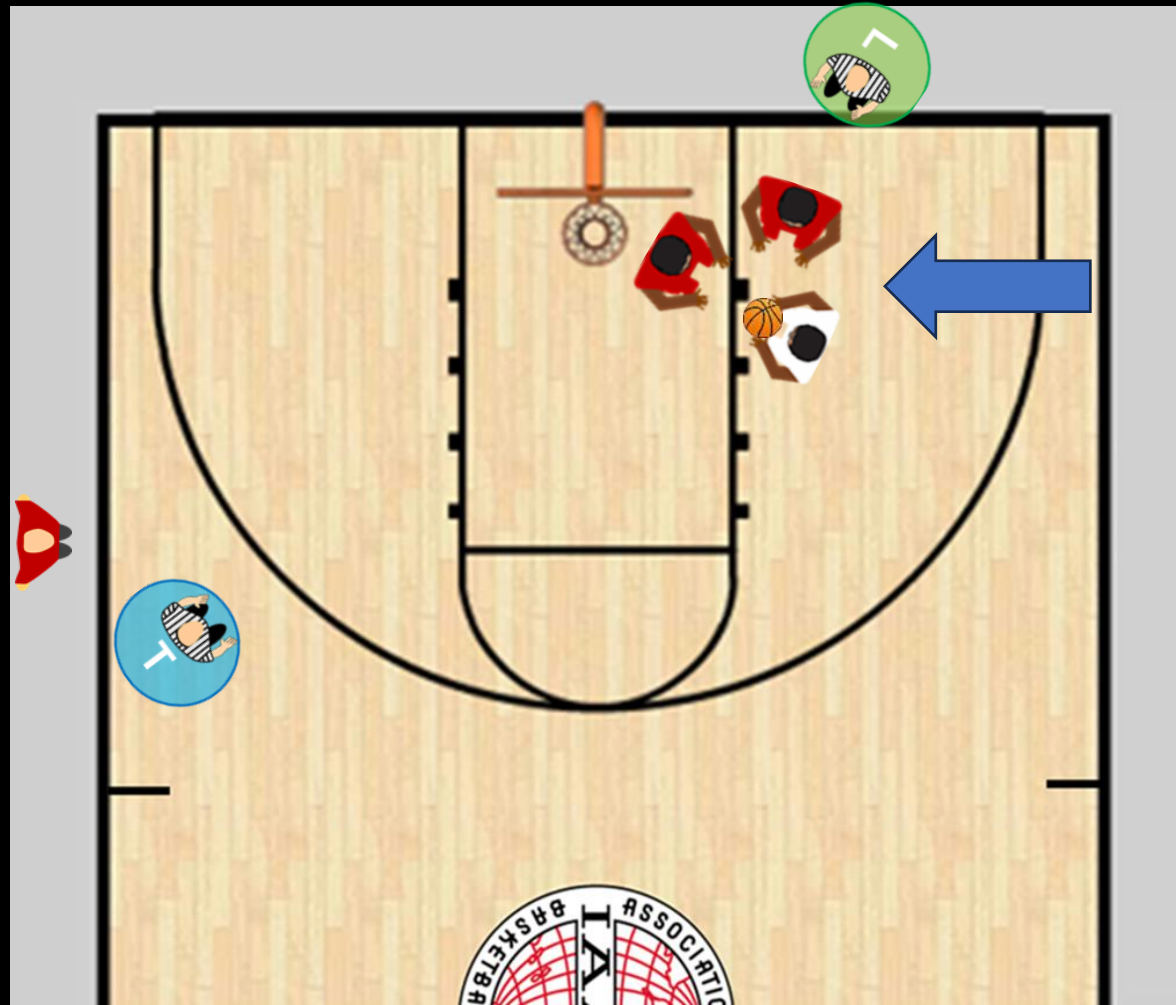


1. Area "Code"
2. The Far Side
3. Screen Shots
4. Numbers Games
5. Switch v Rotation
6. Flop Shop Reminder

AREA "CODE"

Coach says to the trail, "My player got fouled. Why isn't that a foul?"

Trail answers, "It's not my area."

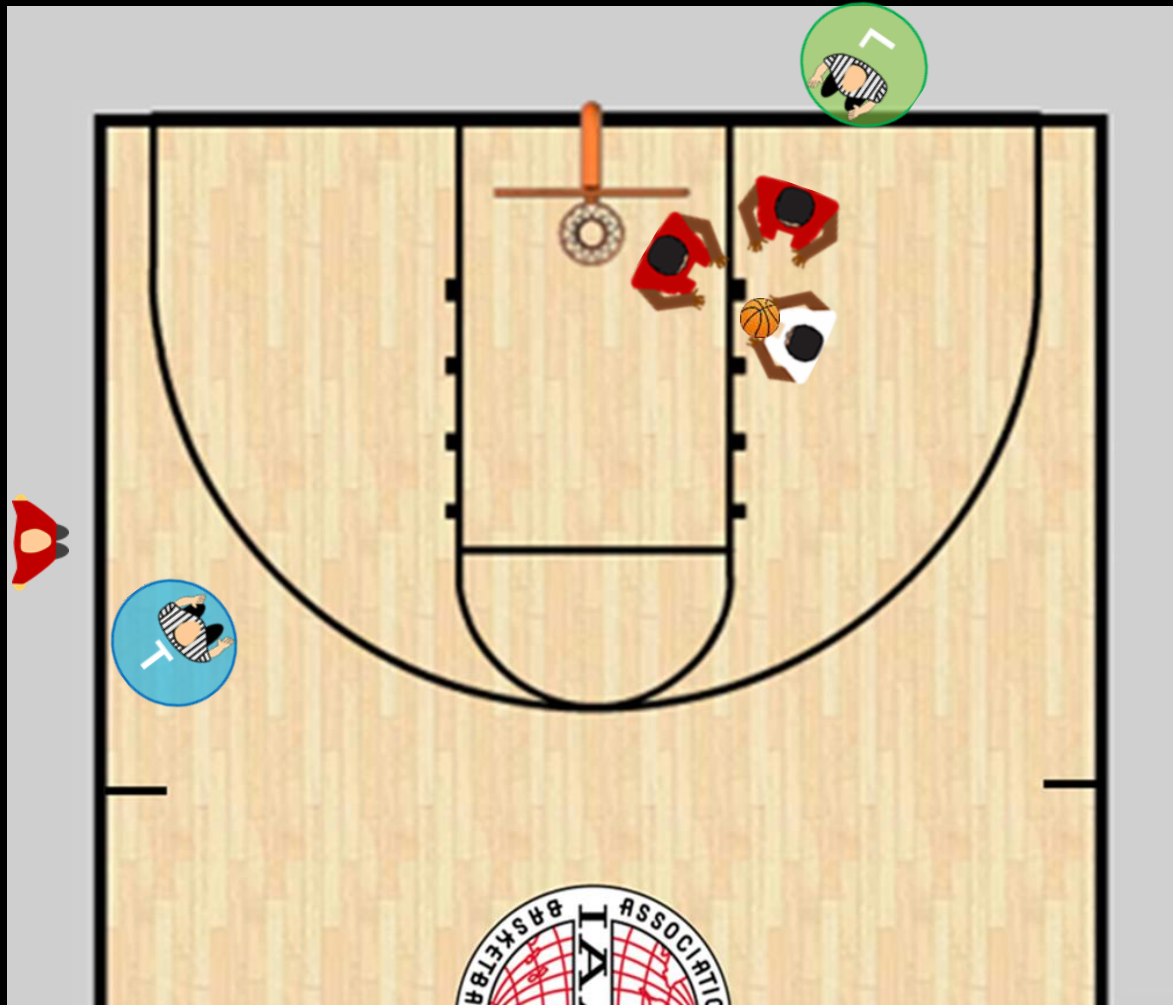


A foul occurs in front of the lead, who is straight-lined, no call is made.

This is "code" for "I saw it, but I don't have the guts to call it."

AREA "CODE"

Basically, what you are doing when you say that to a coach is giving them license to question all your calls or no calls.



What is a better answer?

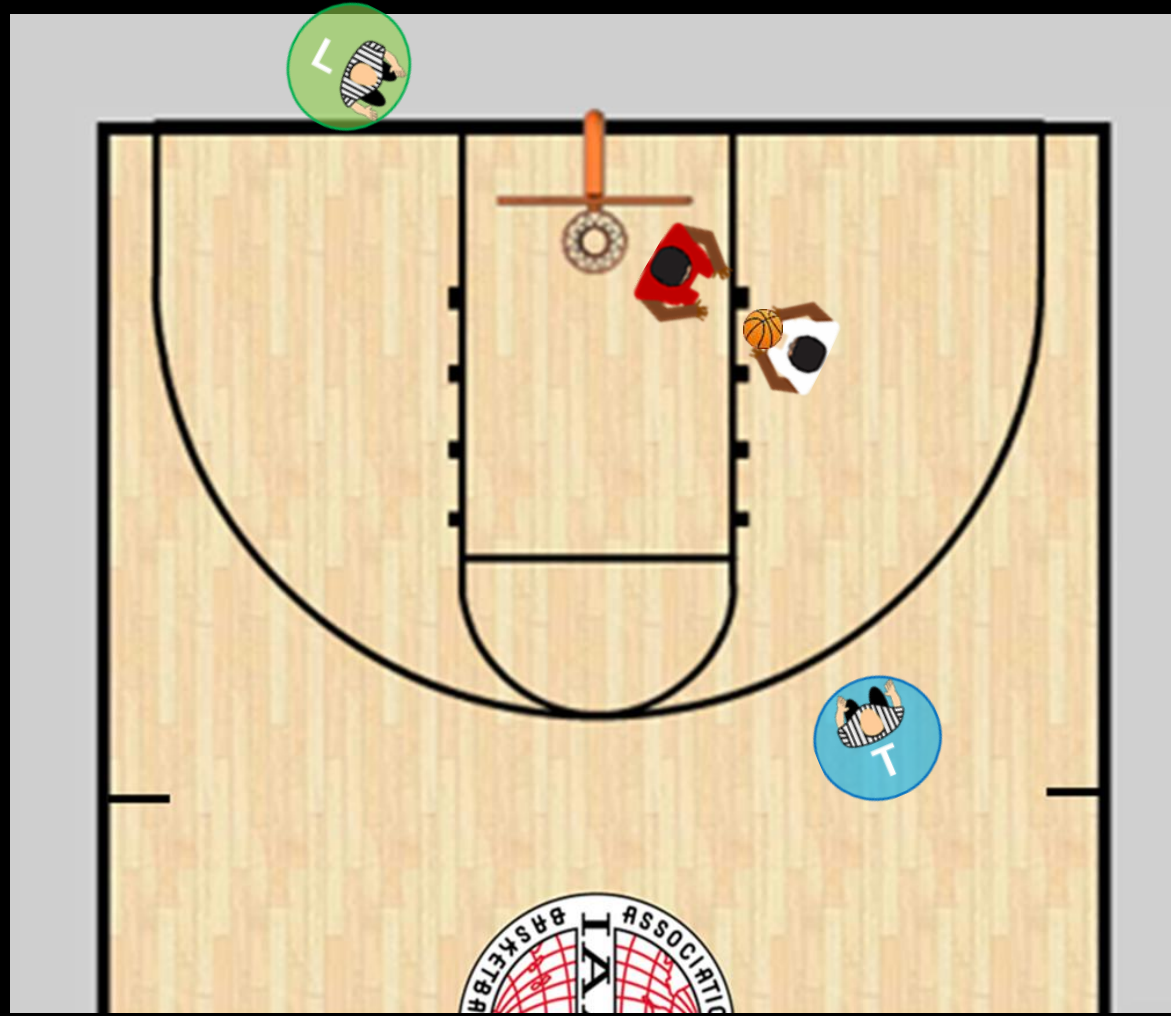
"I wasn't looking there" is a good start.

THE FAR SIDE

Calling fouls across the basket line

Which official has the best look at this play?

The trail has the best look.

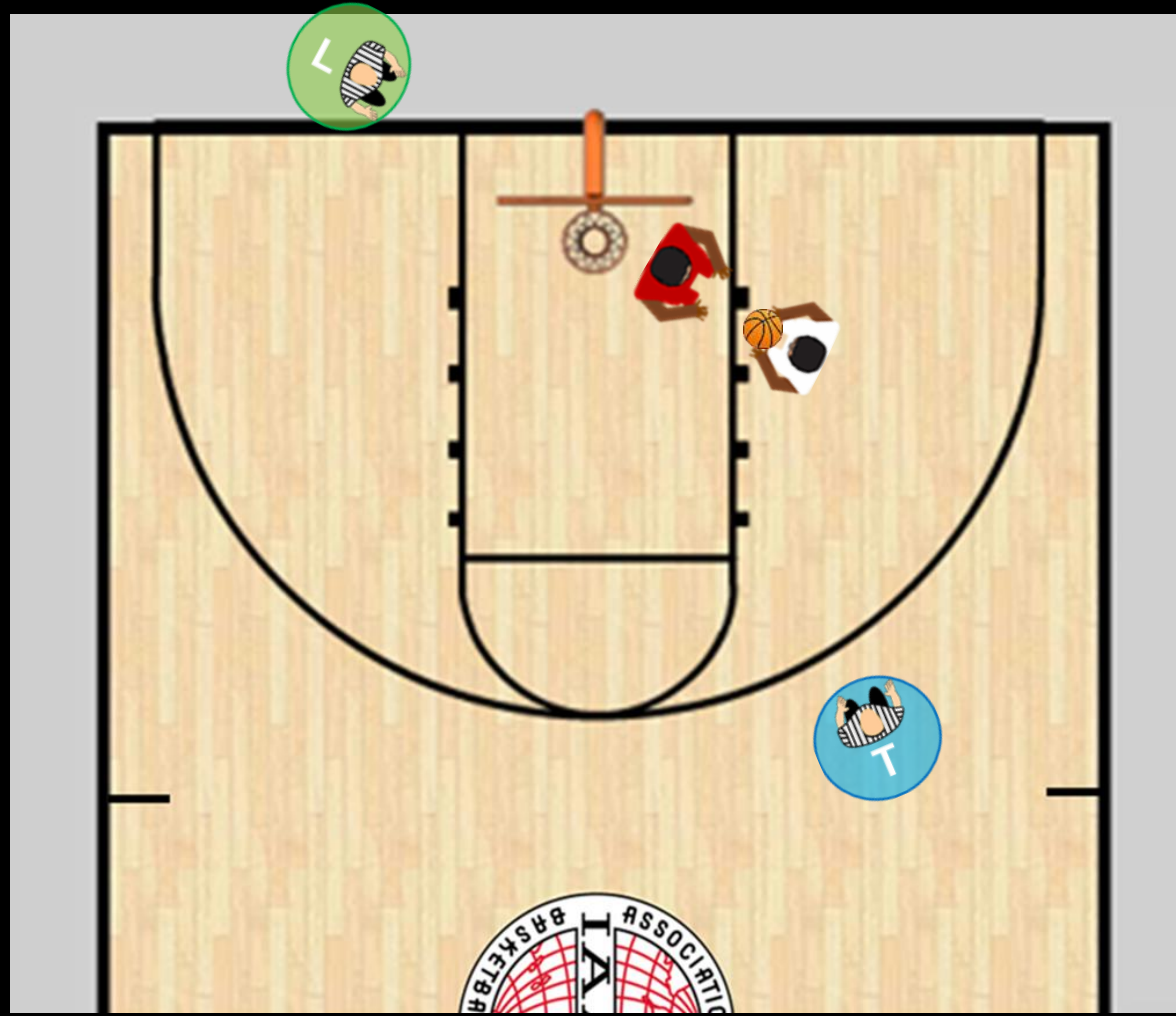


Since the trail has the best look at the play, why are there so many blocking fouls or holding fouls being called by the lead?

THE FAR SIDE

Calling fouls across the basket line

The best decision for the lead to make here is to trust the trail to make the call because the trail has the best look.



In this play, if a try is being attempted, the lead should only make a call if they see illegal use of the hands on the shooter's arm(s).

THE FAR SIDE

Calling fouls across the basket line

Which official has the best look at this play?

The Trail has the best look.



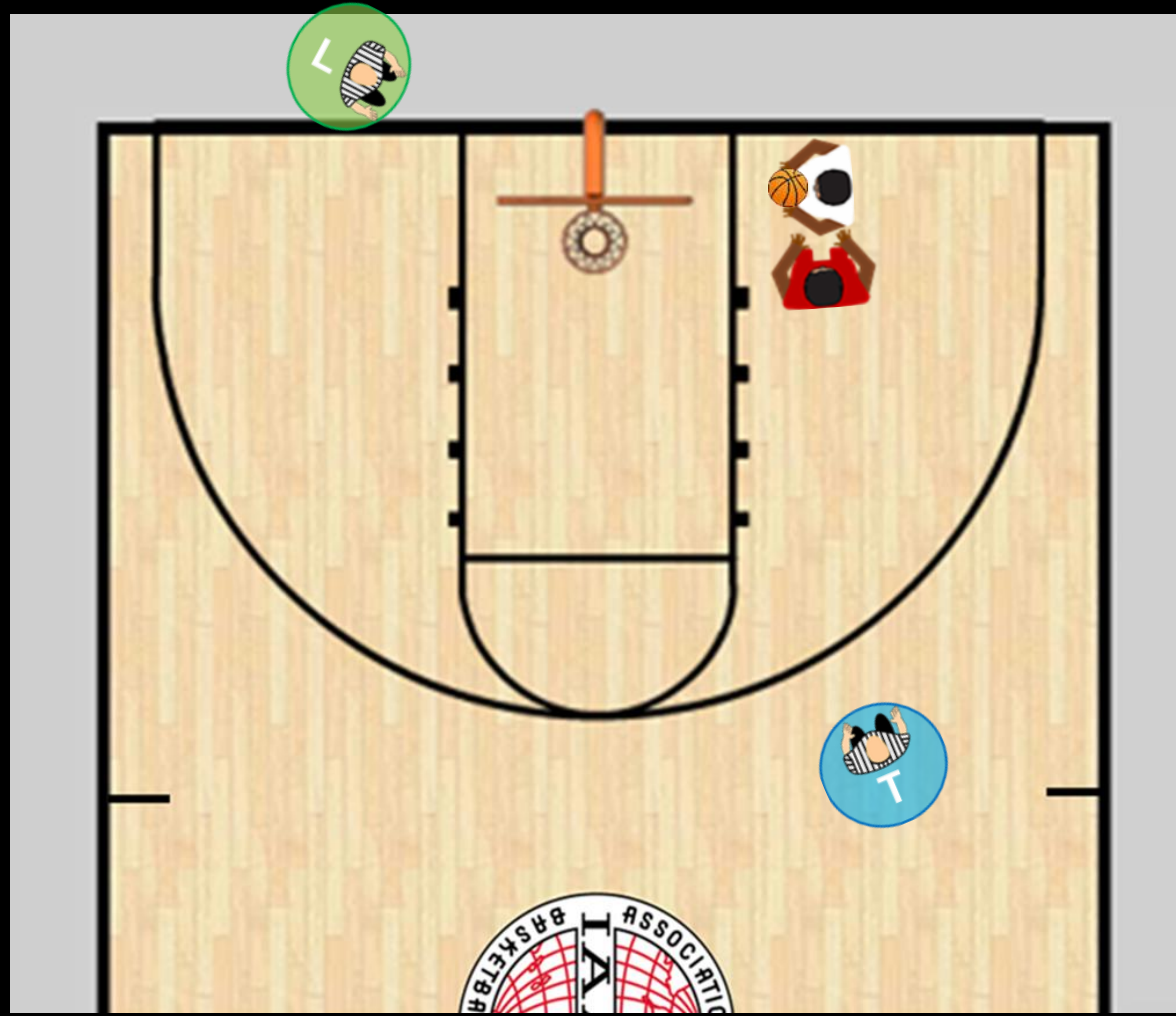
Let's trust the Trail to make the right call.

THE FAR SIDE

Calling fouls across the basket line

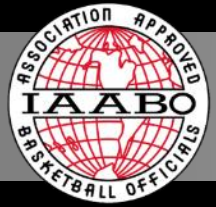
Which official has the best look at this play?

The Lead has the best look.



The Lead should be calling the blocking and pushing fouls.

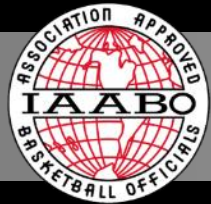
The Trail should be calling illegal use of the hands or holding.



SCREEN SHOTS

Legal Screen



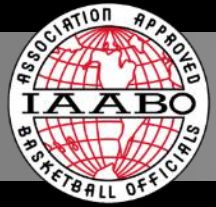


SCREEN SHOTS

Screen & Roll



CCX	1ST	14:14
CHASKA		6
WAYZATA		11

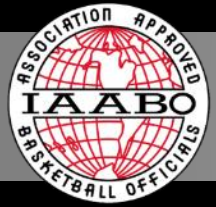


SCREEN SHOTS

Roll while Screening



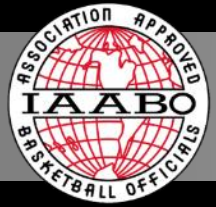
CCX	1ST	12:10
CHASKA		8
WAYZATA		11



SCREEN SHOTS

Dribble Handoff

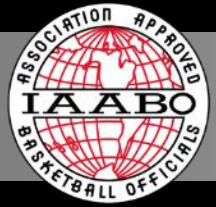




SCREEN SHOTS

Screen at the Free Throw Line





NUMBERS GAMES



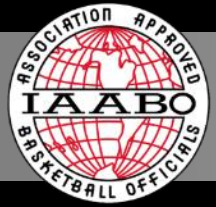
Each team member shall be numbered on the front and back of the team jersey with plain Arabic numerals. The following numbers are legal:

0, 00, 1, 2, 3, 4, 5, 10, 11, 12, 13, 14, 15, 20, 21, 22, 23, 24, 25, 30, 31, 32, 33, 34, 35, 40, 41, 42, 43, 44, 45, 50, 51, 52, 53, 54, 55.

A team member list shall not have both numbers 0 and 00.

Penalize when discovered. Only one technical foul is charged regardless of the number of offenders. (Varsity & JV)

IAABO Rules Guide 2:2 A&B; NFHS 3-4-3d, 10-6-4 Penalty



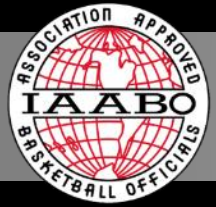
SWITCH V ROTATION



In Crew of Two or Crew of Three games, switches occur during dead ball foul situations.

Crew of Two switches are described in the IAABO manual on pages 49-61.

Crew of Three switches are described in the IAABO manual on pages 123-142.



SWITCH V ROTATION



Rotations occur during live ball situations in Crew of Three games to improve court coverage.

The advantage of rotation mechanics:

1. Enhances the ability of three officials to be in proper position to make accurate rulings.
2. Provides improved court coverage in the frontcourt.
3. Treats both sides of the court the same regarding areas of coverage.
4. Clearly defines specific areas of coverage and responsibility.
5. Enhances the officiating principle of wide triangle coverage.

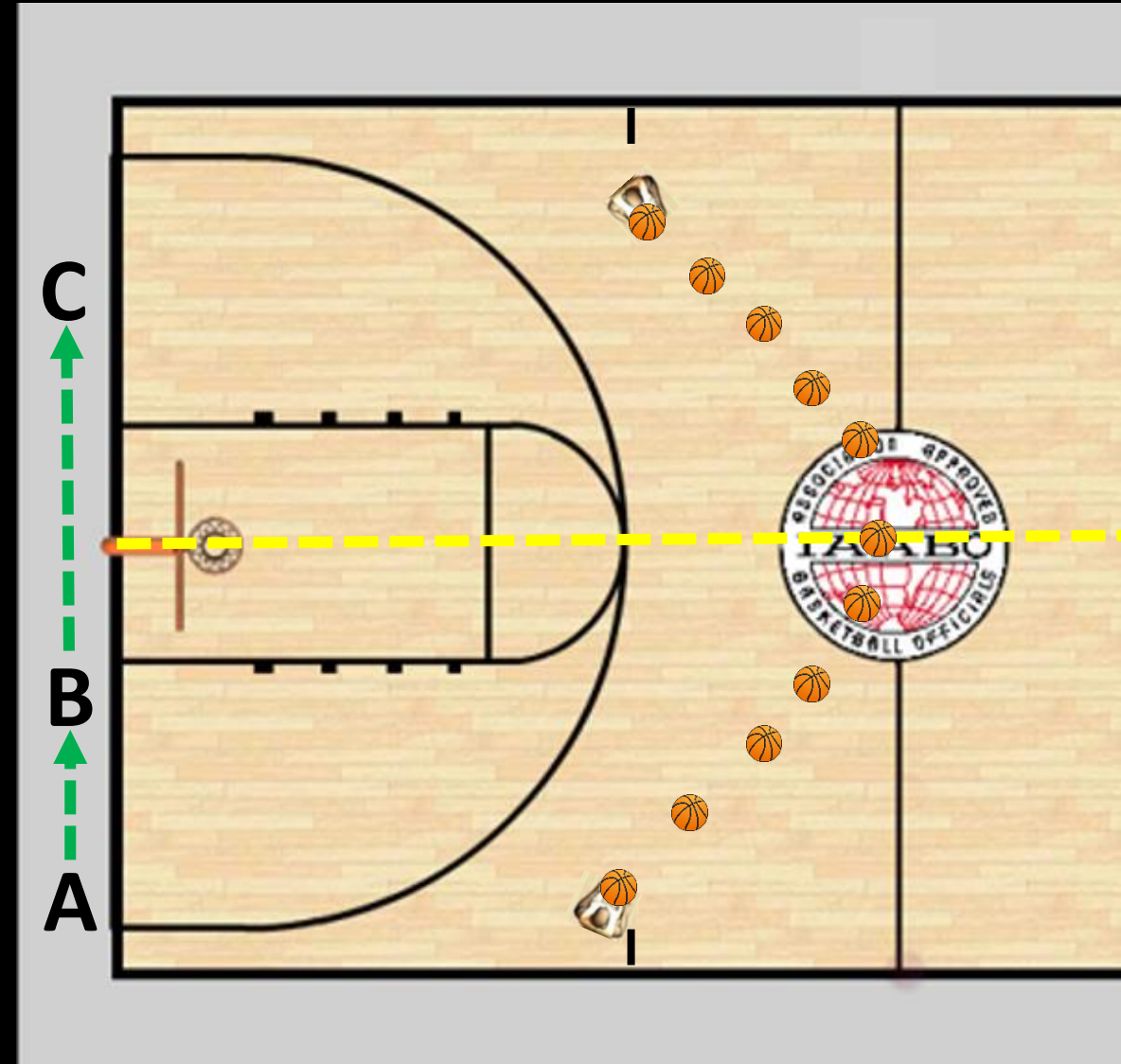
BALL KEYS ROTATION

As the ball moves toward the basketline,

Lead official shall mirror the ball and close down to the **B** position.

Center and **Trail** officials are then on notice that a rotation could be imminent.

Lead may implement a rotation when ball crosses basketline, moving to **C**.



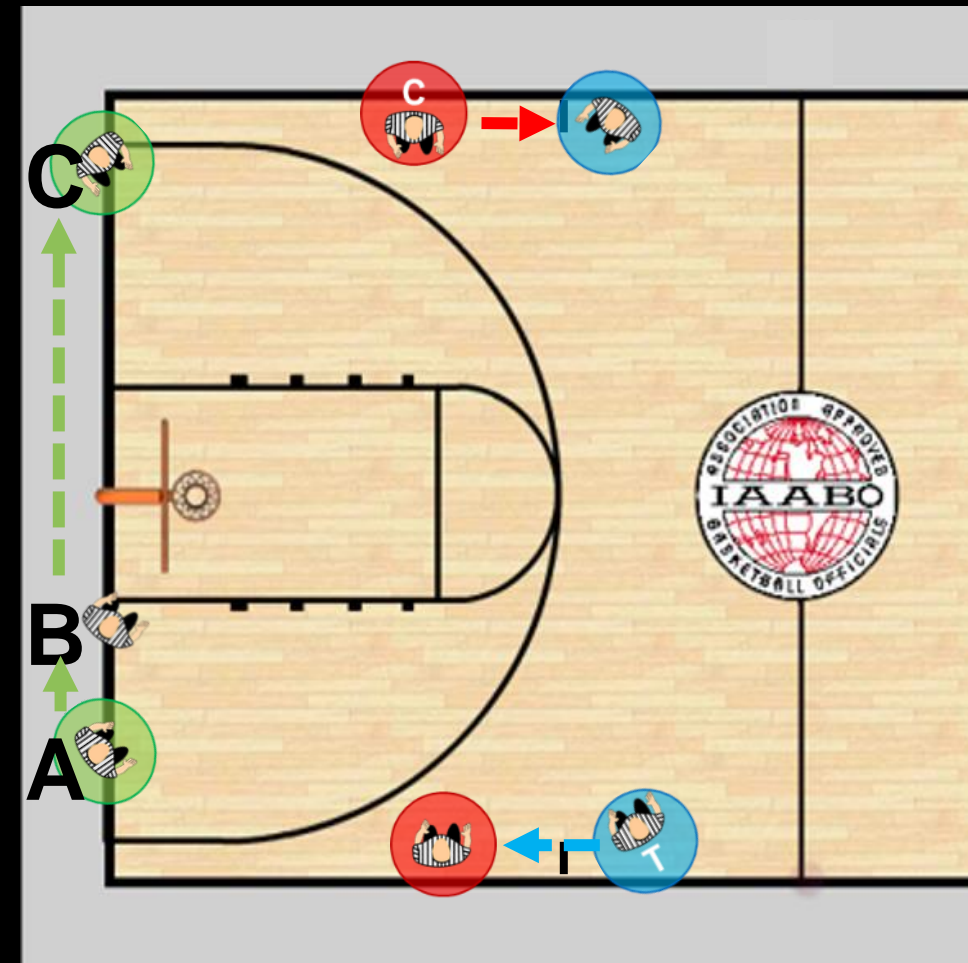
ROTATION AND A-B-C COVERAGE

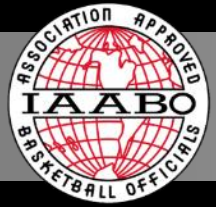
To improve coverage, **Lead** shall apply the A (wide), B (Close down), C (ballside) principle.

As **Lead** closes down (B), **Trail** shall consider closing down.

When **Lead** implements a rotation by moving to ballside (C), **Trail** shall move to **Center**.

Center shall move to **Trail** when appropriate.





CENTER INITIATES ROTATION

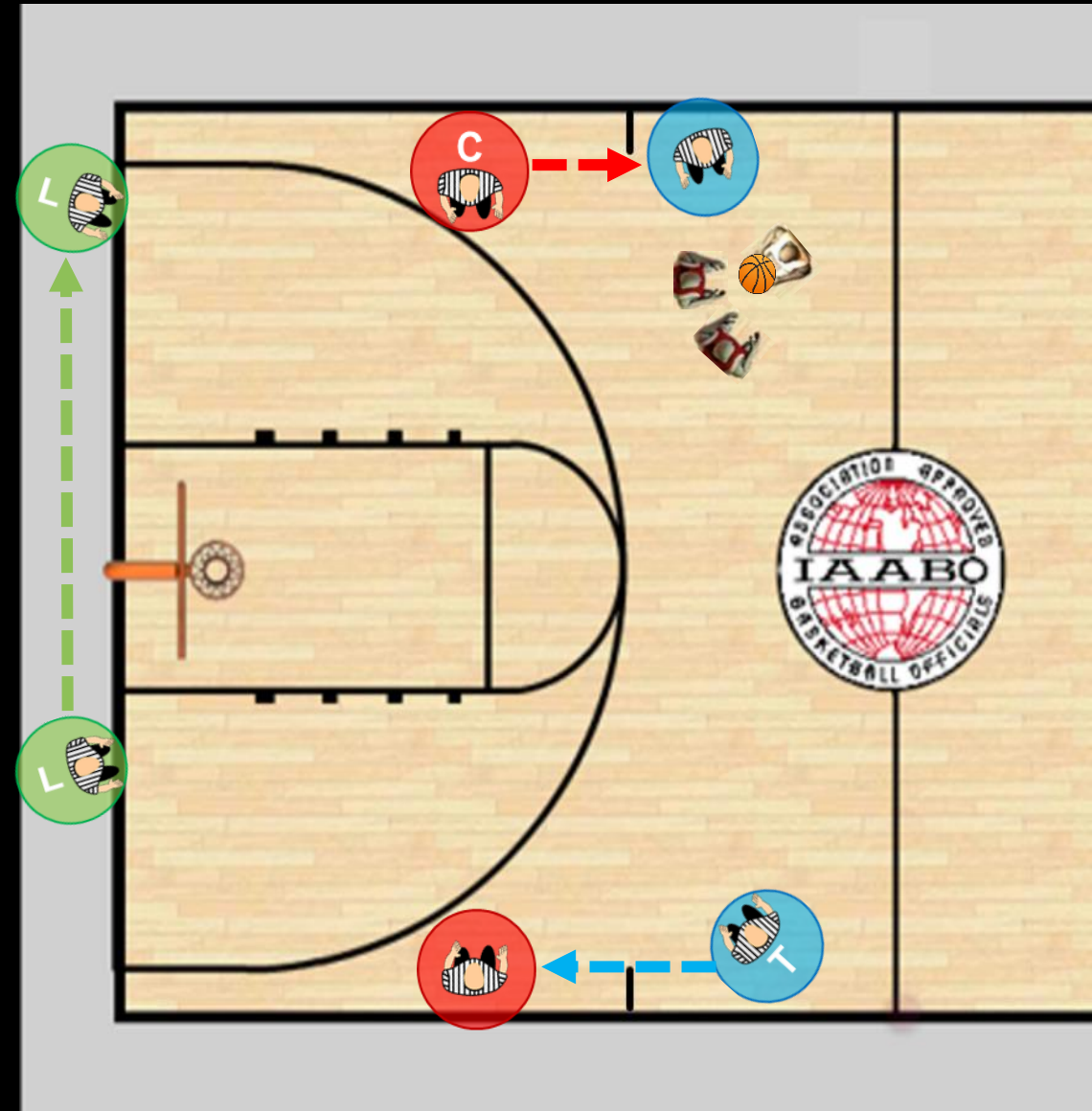


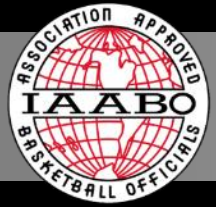
When pressure is applied in frontcourt on **Center's** sideline between the 3-point arc and division line, **Center** may move for maximum coverage to **Trail**.

Although **Lead** has closed down, the **Center**, by moving from an inside out to a topside position, initiates a rotation.

Lead crosses basketline to ballside.

Trail shifts down to become **Center**.



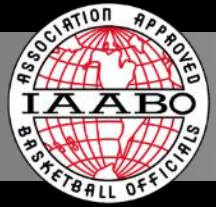


FLOP SHOP



2024-2025 Faking Being Fouled Video

This video is posted on the IAABO Website in the Members Platform/Area and on YouTube.



MY USUAL REMINDERS



Always have a good Pregame.

Trust your partner.

Don't be a ball watcher.

Work your PCA searching for competitive matchups.

Work every game like it's a championship game because...

Most games are being streamed live and you never know who's watching or posting to YouTube, Facebook, X (Twitter), Bluesky, or Snapchat.



WHAT QUESTIONS DO YOU HAVE?